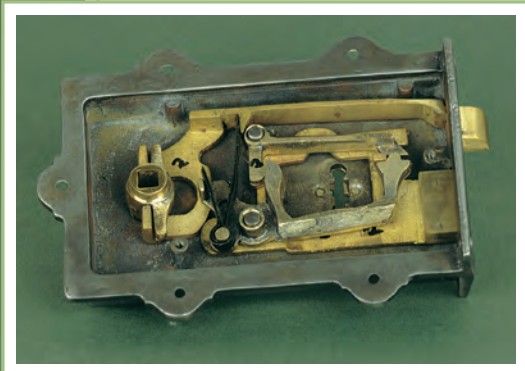
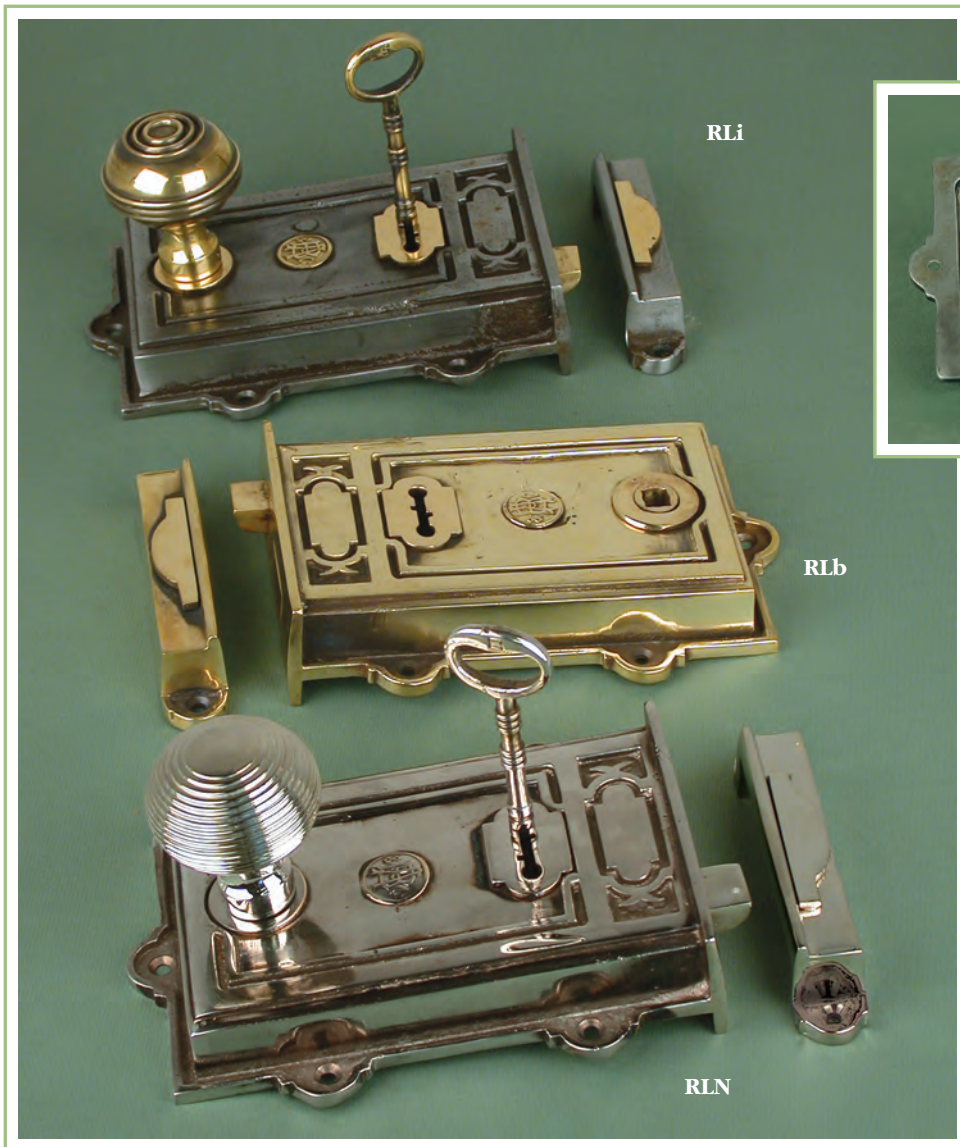


# ARCHITECTURAL HARDWARE



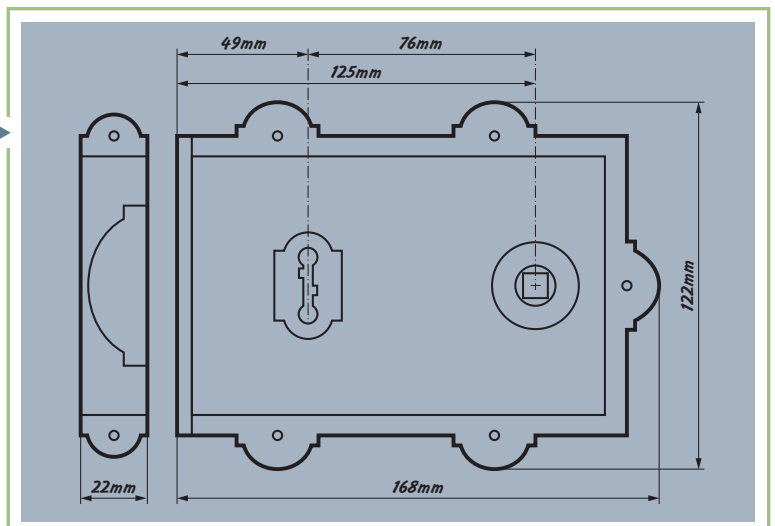
# RIM LOCK



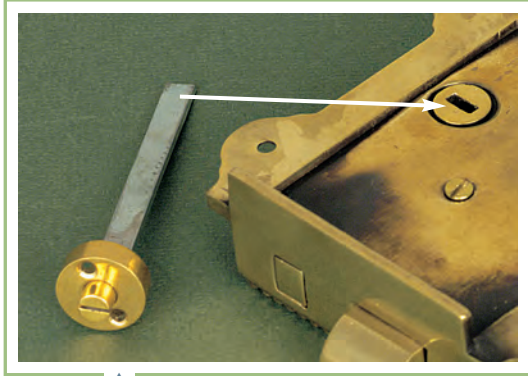
Single lever mechanism, based on an original Victorian design.

Davenport, single lever, dual-handed rim lock. Available in a choice of three 'hand aged' finishes – cast brass (RLb), cast iron with brass fittings (RLi), or nickel plated brass (RLN). Both the external design and internal locking mechanism are based on original Victorian locks. Each lock is hand finished and is supplied with two solid brass keys. (N.B: Keys for nickel locks are plated). A simple variation on the key plate allows us to offer you up to six different keys. Reversed spring catch available upon request. Ideal with knobs DBee or DBlo (see page 5).

*Body – 122mm (H) x 168mm (W). Projection – 29mm*  
*Keep – 122mm (H) x 22mm (W). Projection – 29mm*



# RIM LATCHES



The emergency release catch, fitted as standard on all rim latches.

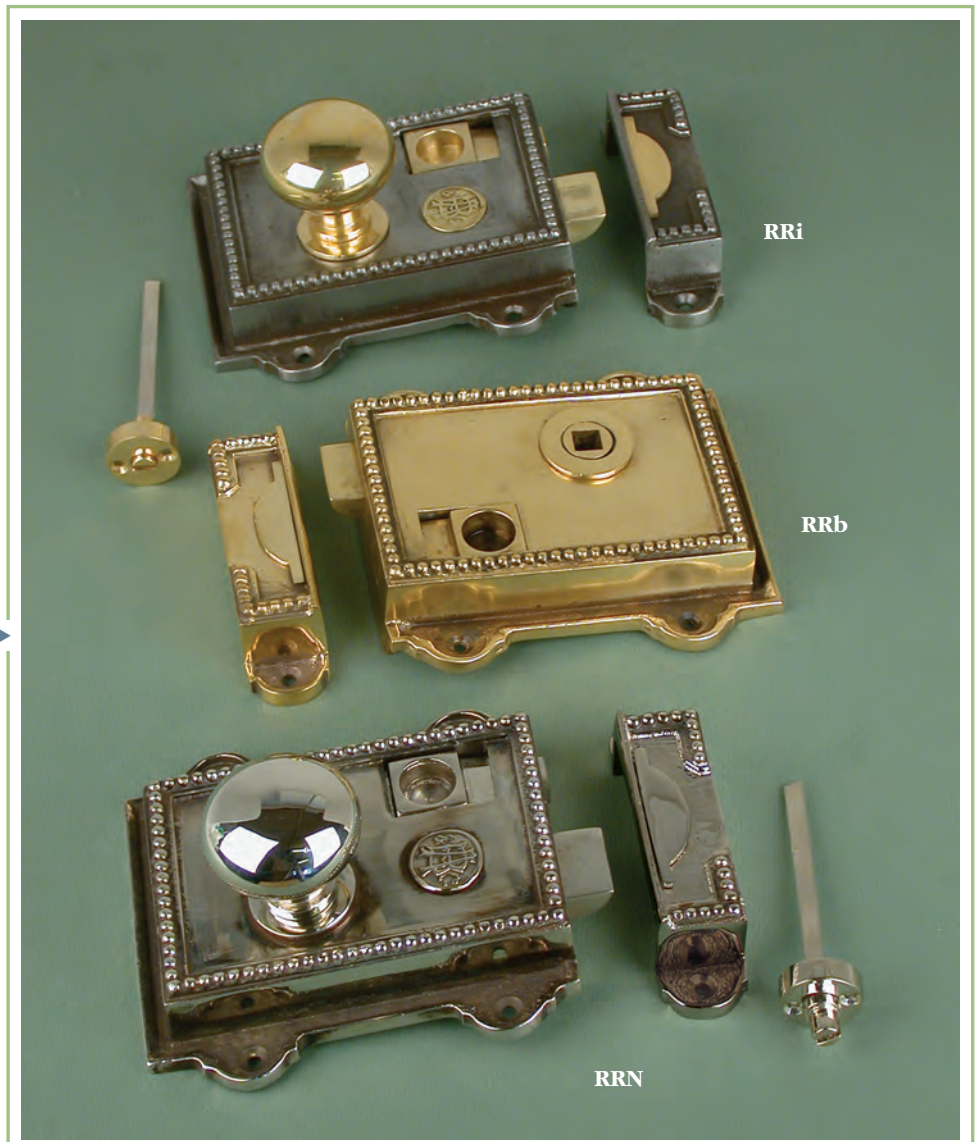
We offer three traditional designs of rim latch – Regency, Cromwell and Victorian. Regency and Cromwell designs are available in a choice of three 'hand-aged' finishes – cast brass, cast iron with brass fittings or nickel plated brass. Our Victorian latch is ONLY available in cast iron with brass fittings.

All spring catches are reversible.

All latches are dual handed, have a traditional thumb nail latch and come complete with an emergency release (facilitating access from outside the room).

Each latch comes boxed with full fitting instructions, screws and fitting template.

Ideal with knob DCo (see page 7).



*Regency rim latch. Available in three hand-aged finishes – cast brass (RRb), cast iron with brass fittings (RRi) or nickel plated brass (RRN).*

*Body – 108mm (H) x 115mm (W).*

*Projection – 27mm*

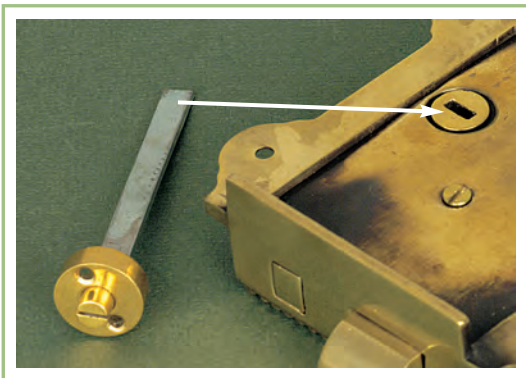
*Keep – 99mm (H) x 24mm (W).*

*Projection – 27mm*

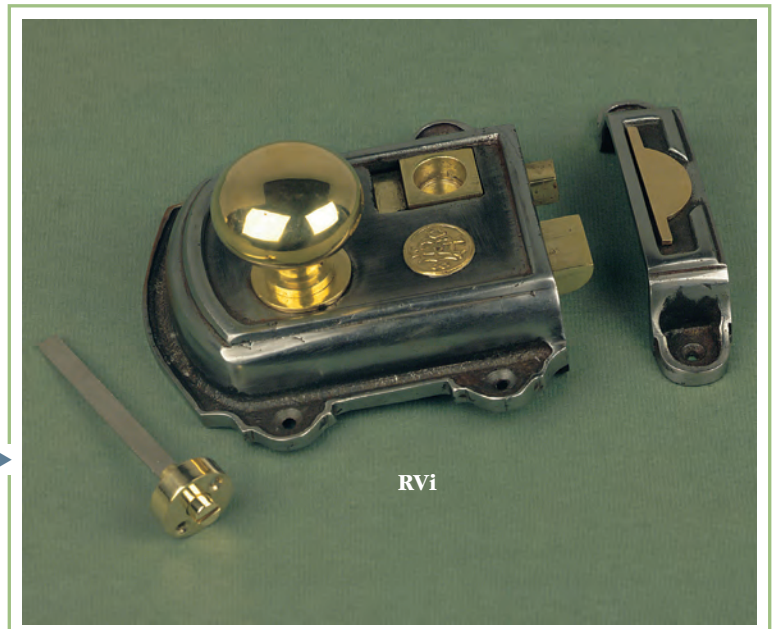
RIM LATCHES Continued



*Cromwell rim latch  
Available in three hand-aged finishes – cast brass (RCb)  
cast iron with brass fittings (RCi)  
or nickel plated brass (RCN).  
Body – 108mm (H) x 123mm (W).  
Projection – 24mm  
Keep – 108mm (H) x 24mm (W).  
Projection – 24mm*



The emergency release catch, fitted as standard on all rim latches.



*Victorian rim latch.  
Available in cast iron ONLY (RVi).  
Body – 113mm (H) x 115mm (W). Projection – 24mm  
Keep – 113mm (H) x 24mm (W). Projection – 24mm*

# KNOBS & LEVERS



Solid brass door and cupboard knobs. Available in aged brass or polished nickel finish.



CODE	DESCRIPTION	DIMENSIONS (mm)			COMMENTS
		KNOB	ROSE	PROJ.	
CBee1 / CBee1N	Small Beehive cupboard knob	32	-	28	• Aged brass or polished nickel finish
CBee2 / CBee2N	Large Beehive cupboard knob	41	-	32	• Aged brass or polished nickel finish
DBee / DBeeN	Beehive door / rim lock knob	49	50	60	• Mortice or rim fixing • Aged brass or polished nickel finish
CBlo1 / CBlo1N	Small Bloxwich cupboard knob	32	-	28	• Aged brass or polished nickel finish
CBlo2 / CBlo2N	Large Bloxwich cupboard knob	41	-	27	• Aged brass or polished nickel finish
DBlo / DBloN	Bloxwich door / rim lock knob	50	50	62	• Mortice or rim fixing • Aged brass or polished nickel finish



A larger variation of our popular (DBee) Beehive door knob in a period 'bumblebee' shape. This product weighs around the same as its counterpart ensuring it works effectively with both modern and period latches. Made in cast brass. Available in either aged brass (DBee2) or polished nickel (DBee2N) finishes. Ideal for use on larger doors.

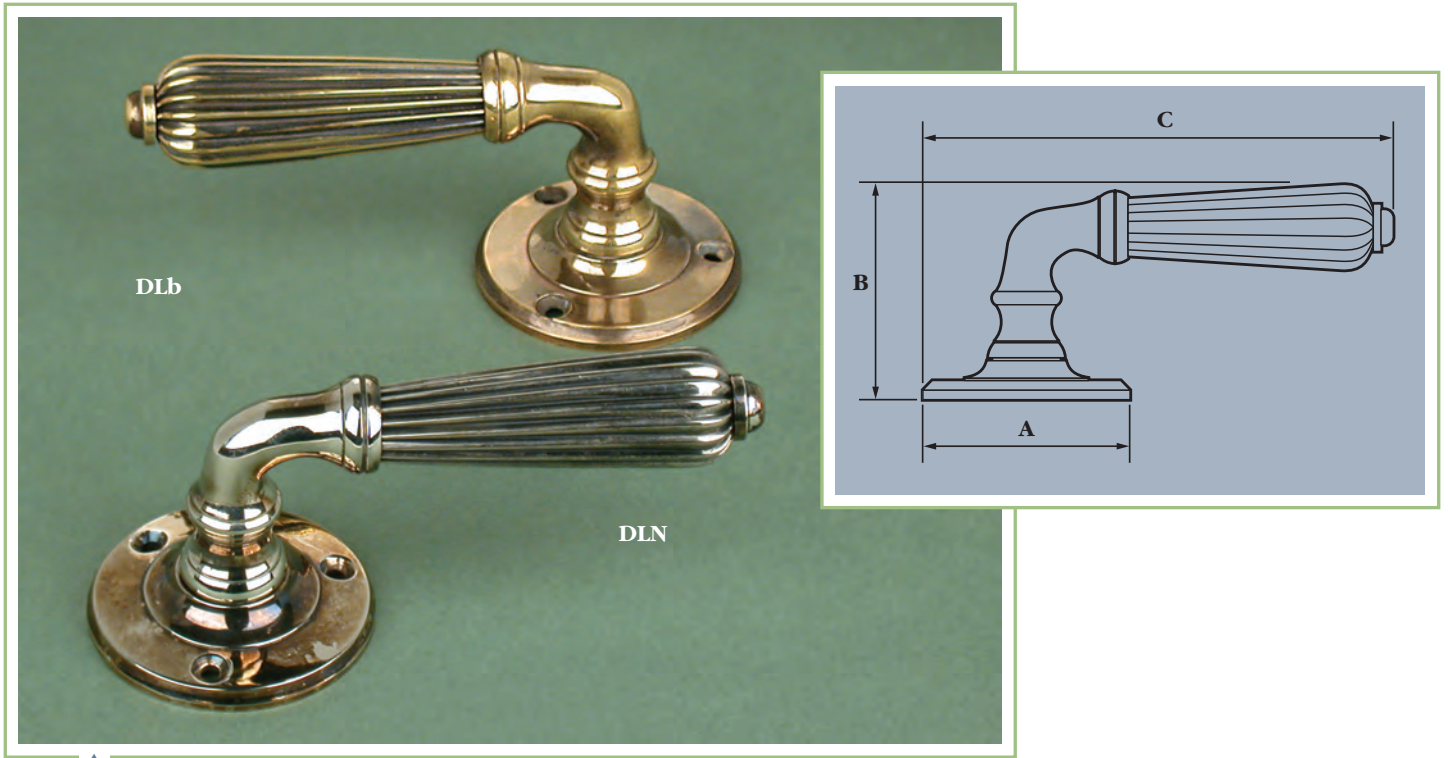
Mortice or rim fixing.

*Knob – 59mm.*

*Rose – 60mm.*

*Projection – 83mm.*





A faithful copy of a beautiful, original Regency lever handle.  
 This lever is un-sprung and for mortice fixing only.  
 Available in a choice of two 'hand aged' finishes – aged brass (DLb) or aged nickel (DLN).

- A. Rose – 57mm.
- B. Projection – 59mm.
- C. Lever width – 129mm.

A larger example of our popular Bloxwich door knob, but weighing around the same to ensure it works effectively with both modern and period latches. Made in cast brass. Available in either aged brass (DBlo2) or polished nickel (DBlo2N) finishes. Ideal for use on larger doors. Mortice or rim fixing.

- Knob – 63mm.
- Rose – 63mm.
- Projection – 77mm.



## KNOBS & LEVERS continued



### Ball Knob

*Knob - 45mm.*

*Rose - 61mm.*

*Projection - 76mm.*

### Oval Knob

*Knob - 60mm long x 38mm wide.*

*Rose - 61mm.*

*Projection - 66mm.*







A choice of two superbly crafted door knobs in solid ebony – a wood long regarded as one of the finest and most decorative hardwoods, which polishes to a superb lustrous finish and is excellent for achieving fine detail when turned. Two classical designs – the elegant Victorian Beehive (with matching escutcheon) and the classic Edwardian Bun. Supplied complete with cast brass rose plates, spindle and screws. Rim or mortice fixing. Fittings available in aged brass or polished nickel finish making them an ideal choice for either a period or contemporary setting.

Beehive Knob

*Knob – 52mm.*

*Rose – 61mm.*

*Projection – 70mm.*

Bun Knob

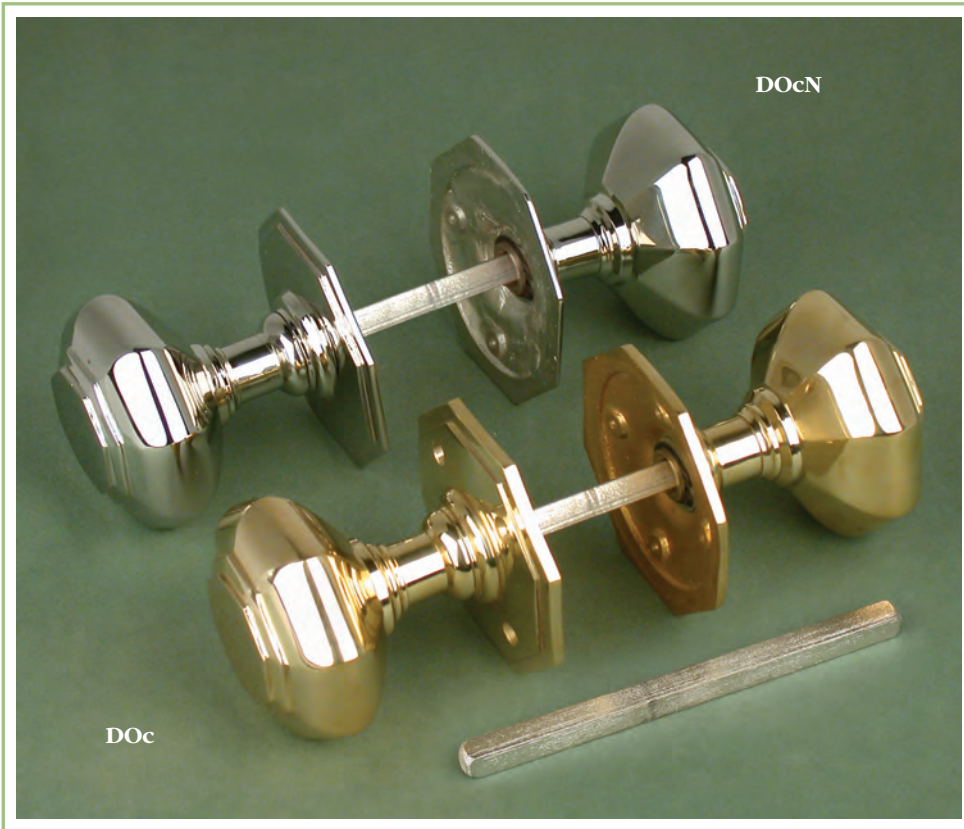
*Knob – 54mm.*

*Rose – 60mm.*

*Projection – 60mm.*



**KNOBS & LEVERS** continued

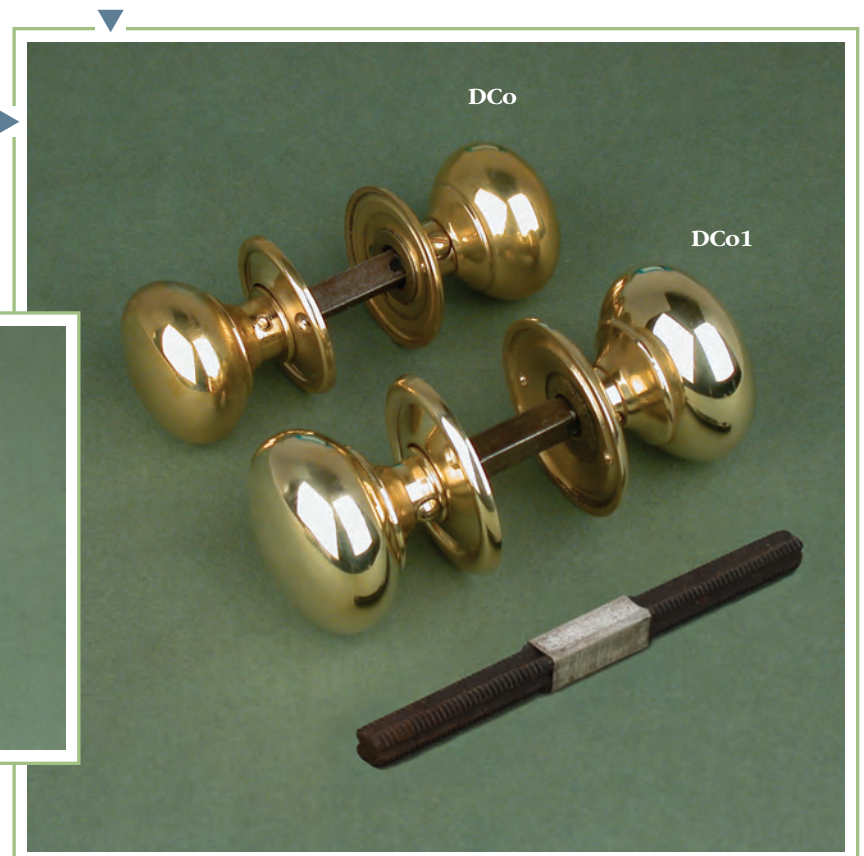


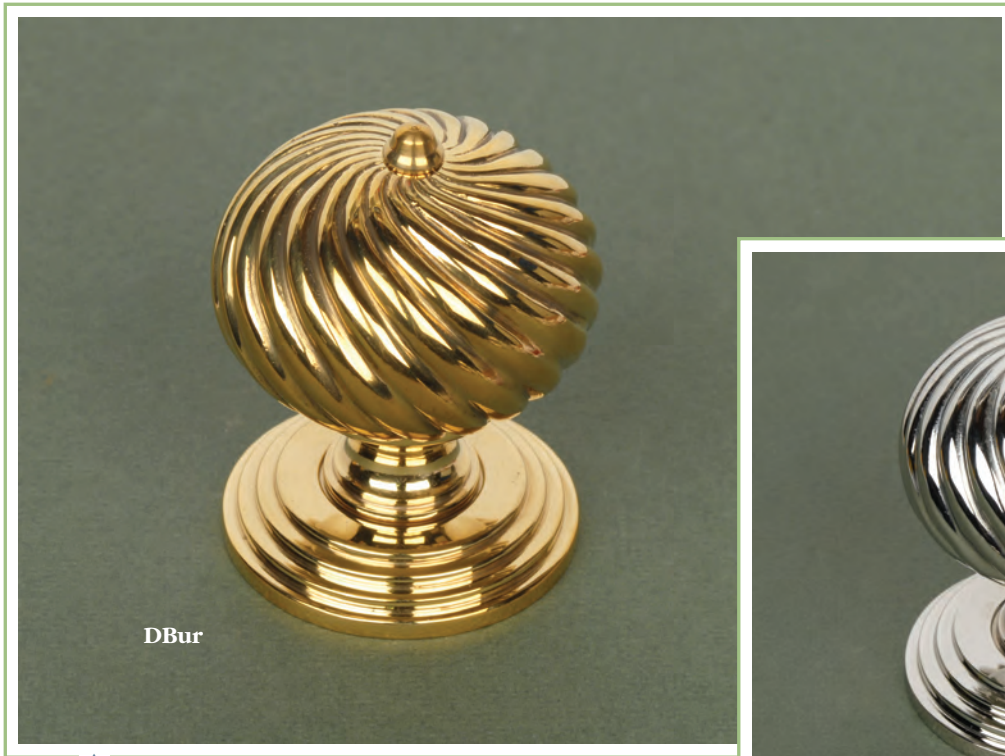
73mm octagonal door knob (mortice fixing ONLY) made from cast brass. Available in polished brass (DOc) or nickel (DOcN) finish. Ideal accompaniment for our large octagonal door pull (103mm), which is also available in brass or nickel finish (see page 21).

*Projection – 78mm  
Knob – 73mm (points) 68 (flats)  
Rose – 81mm (points) 77 (flats)*

A choice of two cottage knobs – large (51mm) or small (42mm) made from cast brass. Both available in polished brass or nickel finish. Mortice or rim fixing. Ideal for use with our range of rim locks and rim latches.

- *SMALL*  
Knob & Rose – 42mm diameter  
– 45mm projection
- *LARGE*  
Knob & Rose – 51mm diameter  
– 47mm projection





A classical door knob from the Edwardian period, the Burcot, with a beautiful swirl pattern that runs around the entire knob. Each knob is secured with a concealed fixing hidden beneath the rose (un-sprung) which is stepped inside - this helps maintain its elegant lines.

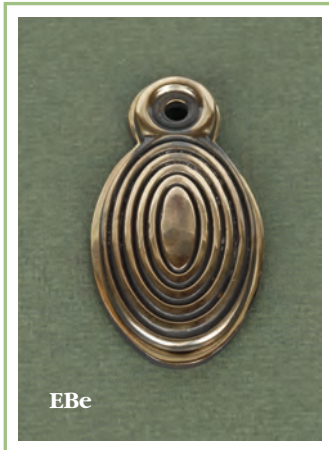
The brass knobs and roses are both cast in brass. Available in two finishes – polished brass and polished nickel.

Mortice fixing only. Supplied with fixing screws and spindle.

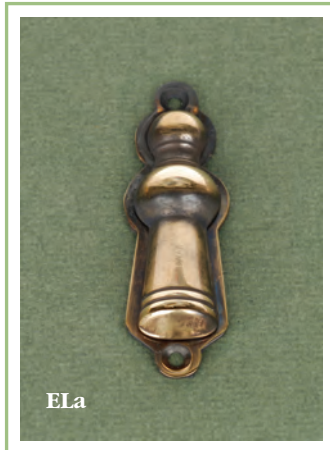
*Knob diameter – 60mm  
Rose diameter – 60mm  
Projection – 75mm  
Spindle – 100mm long x 8mm across flats*



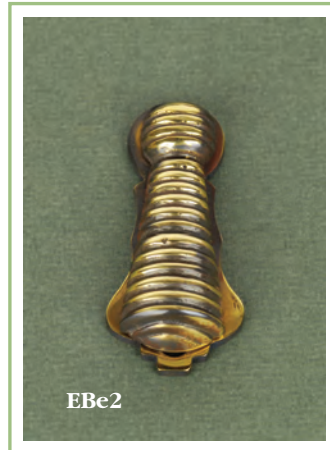
# ESCUTCHEONS



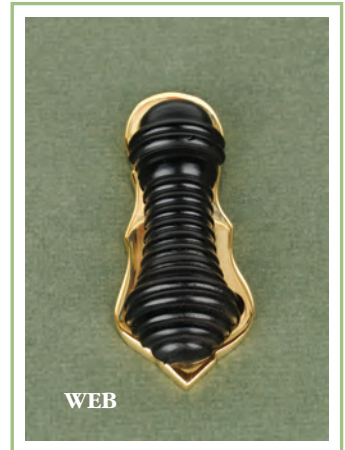
EBe



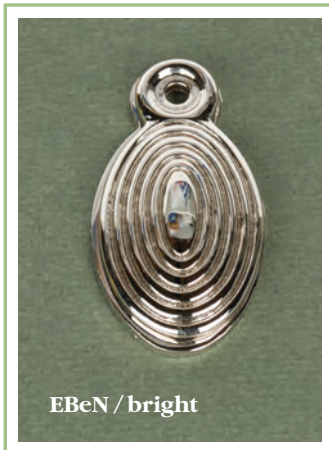
ELa



EBe2



WEB



EBeN / bright



ELaN / bright



EBe2N



WEBN



EBeN / aged



ELaN / aged

We offer a choice of four designs of escutcheon – three in solid brass and one in solid ebony / brass. Machine forged for superior quality. Supplied with fixing screws

They come in a variety of finishes and are the ideal accompaniment for our other door furniture.

DESCRIPTION	CODE	FINISH	DIMENSIONS
Beehive escutcheon	EBe	Aged brass	55mm x 28mm x 8mm
	EBeN / bright	Polished nickel	
	EBeN / aged	Aged nickel	
Lady escutcheon	ELa	Aged brass	62mm x 19mm x 10mm
	ELaN / bright	Polished nickel	
	ELaN / aged	Aged nickel	
Large Beehive escutcheon	EBe2	Aged brass	58mm x 26mm x 12mm
	EBe2N	Polished nickel	
Ebony Beehive escutcheon	WEB	Polished brass	62mm x 26mm x 13mm
	WEBN	Polished nickel	



Clh

ClhN

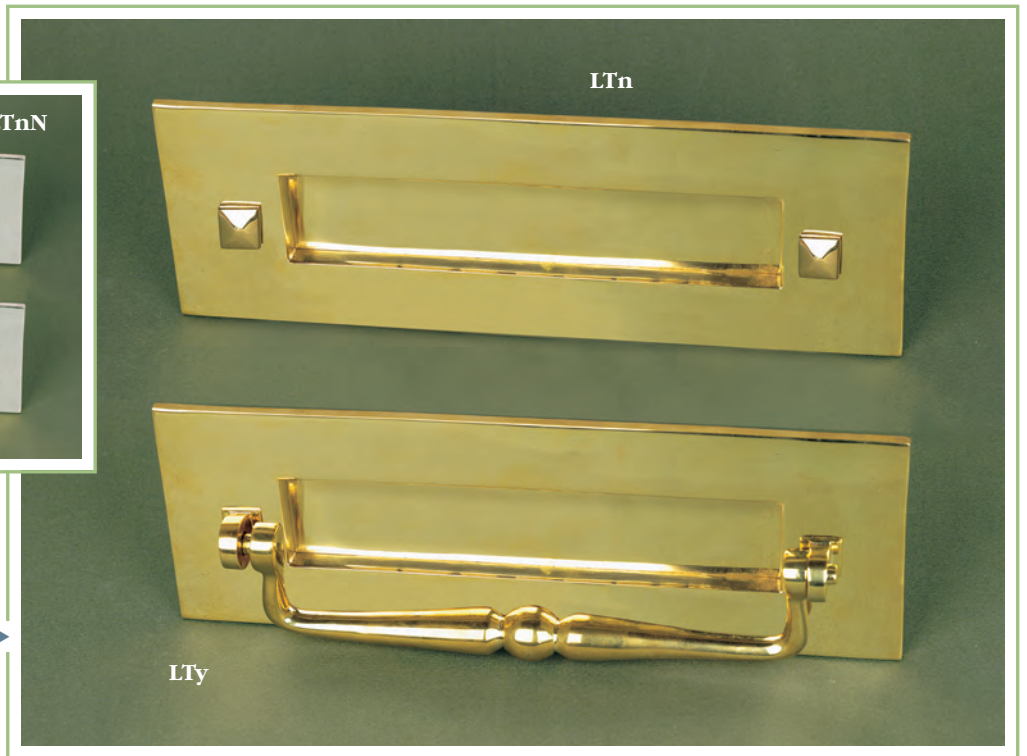


Remove all signs of a modern rim cylinder lock with this period Lionshead lock cover, which also doubles as a knocker. Easy and quick to fit – directly over the existing rim cylinder. Available in either aged brass (Clh) or aged nickel finish (ClhN).

*58mm wide x 82mm high x 37mm projection.*



# LETTERBOXES & TIDY



Traditional style

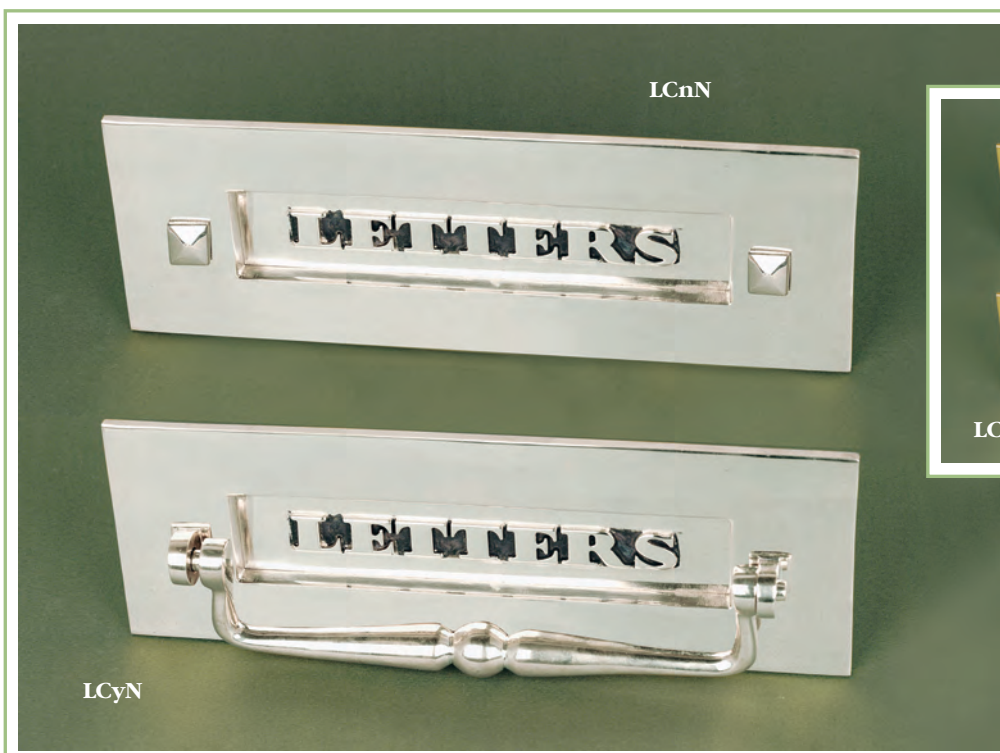
A choice of two styles of solid brass letterboxes (with or without clapper) Traditional and Classic. Machine forged, spring loaded, 'LETTERS' flap for superior finish. Aged finish on flap, on both Traditional and Classic styles.

Standard size for both styles.

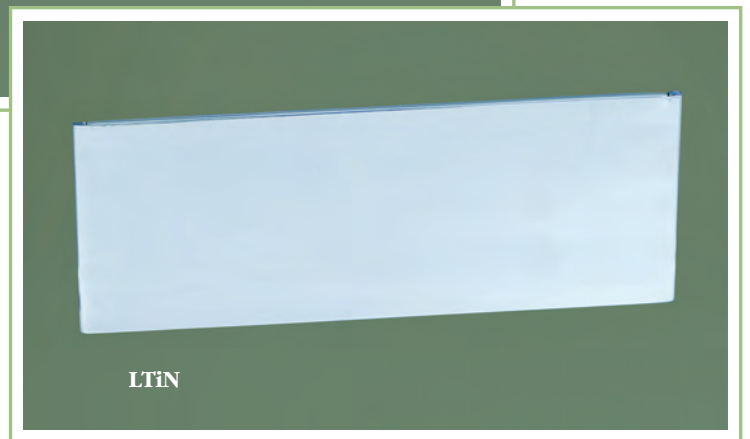
*Width – 300mm, Height – 102mm.*

*Projection (WITHOUT) – 11mm, (WITH) – 30mm.*

*Letterbox opening – 200mm x 40mm.*



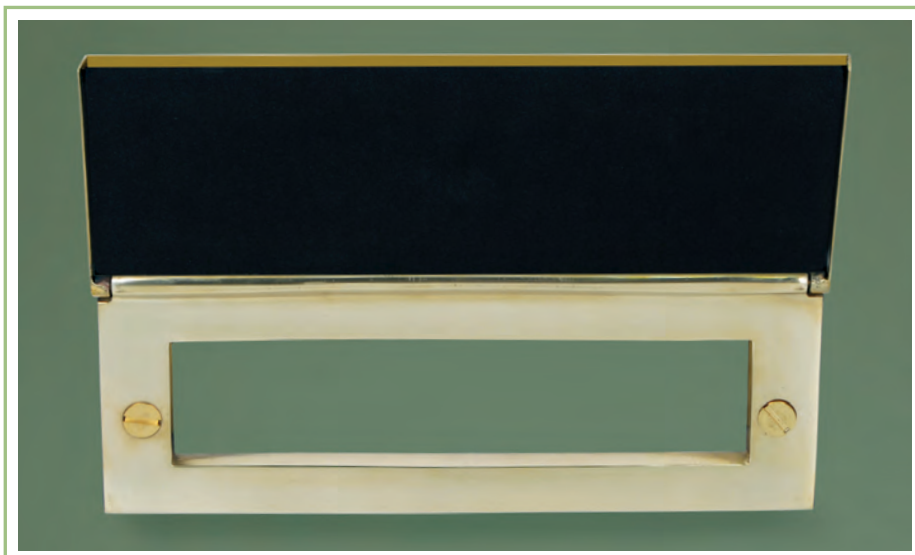
Classic style



This letterbox tidy is a natural cross-sell if you're selling one of our Traditional or Classic letterboxes. It not only transforms the internal appearance of the front door but also helps to reduce drafts.

Of heavyweight construction, with secrete fixings. Made in cast brass with un-sprung, sheet brass flap. Available in either polished brass (LTi) or polished nickel (LTiN) finishes.

*270mm (W) x 103mm (H) x 15mm Projection.*



▶ IMPORTANT: Please note that this product is ONLY compatible with our letterboxes

# BELLS, PULLS & PRESSES

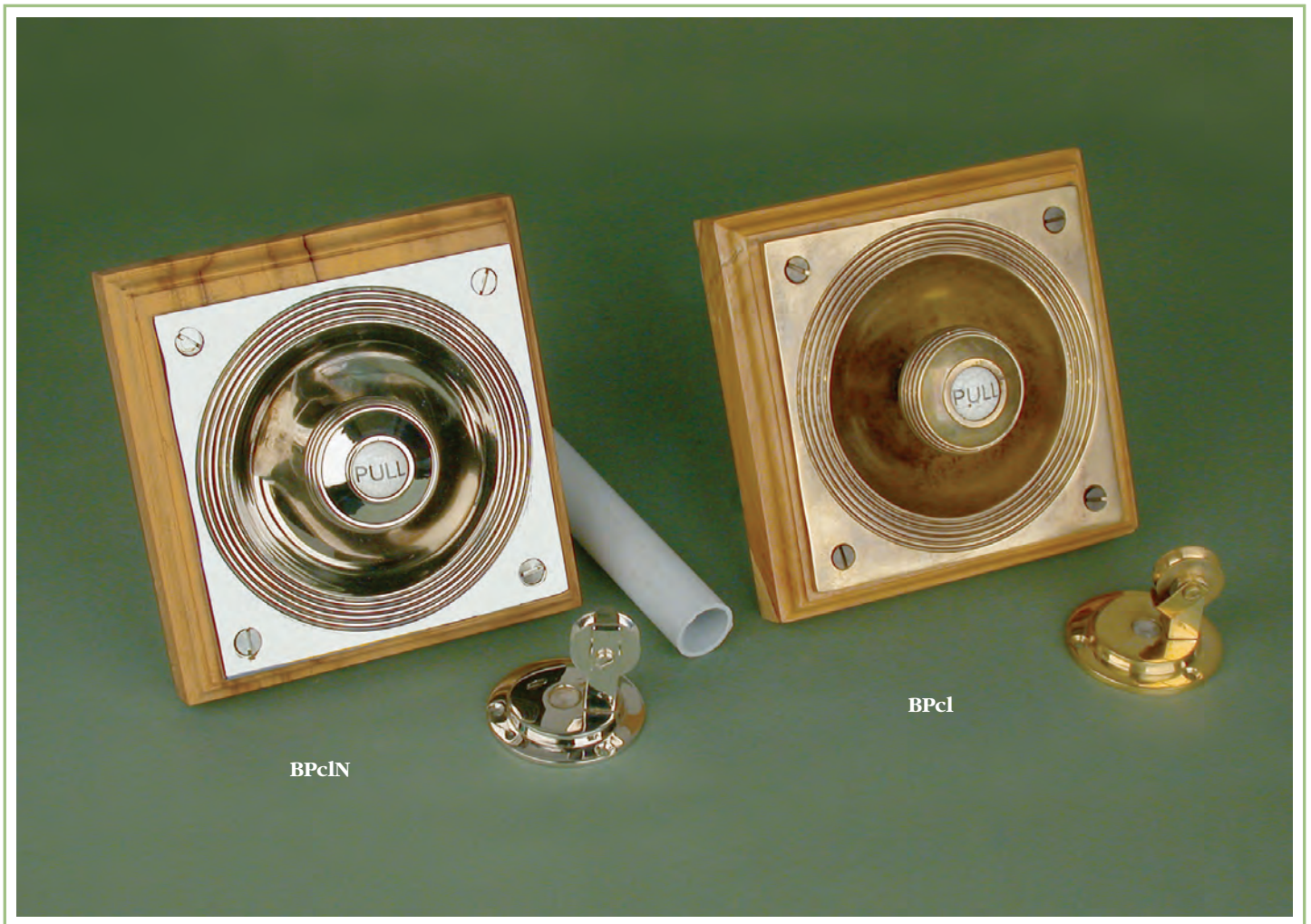


Solid brass Winchester bell pull. Aged brass or aged nickel finish. Complete with blanking pulley (for inside the house), screws, rawplugs and fitting instructions.

*830mm (H), 125mm (W). Projection 60mm.*





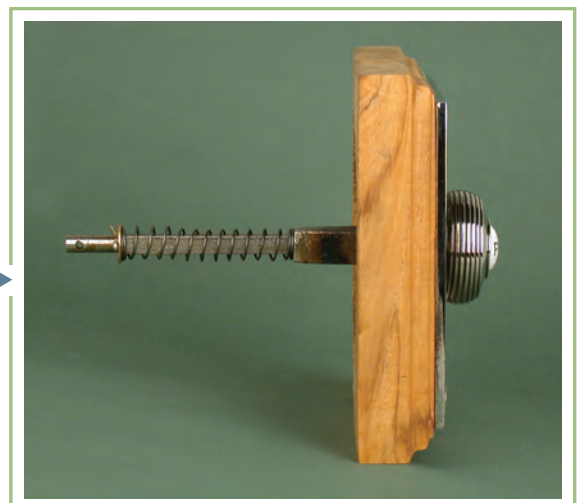


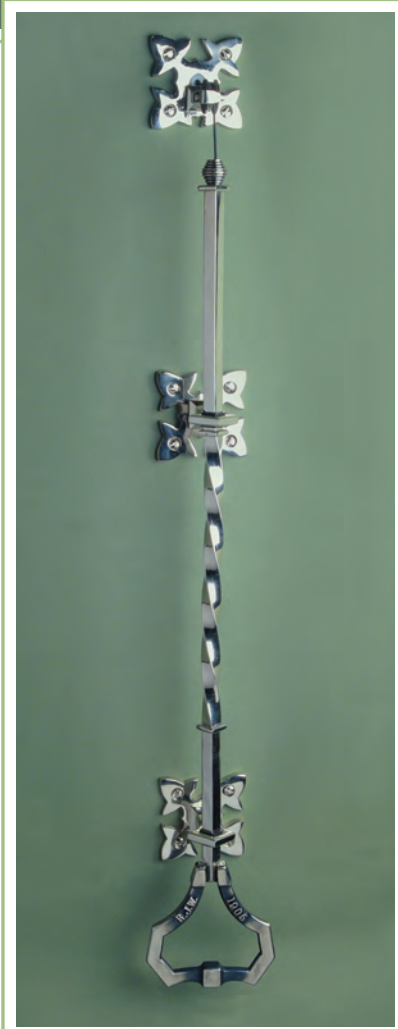
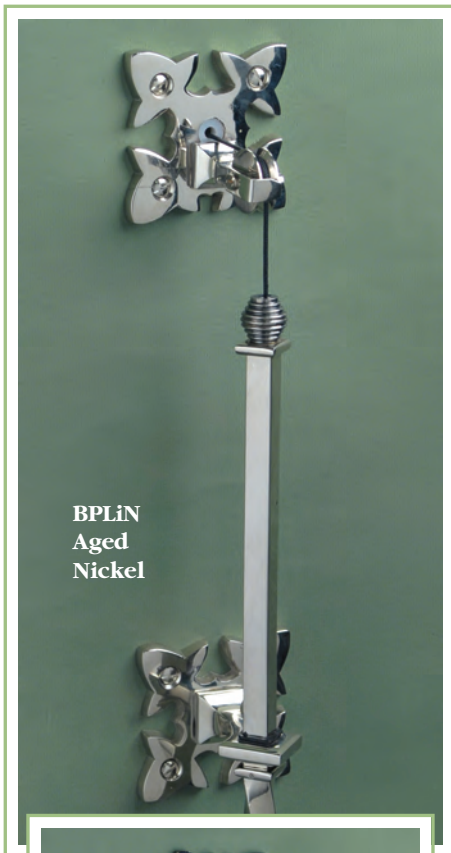
Solid brass Claverley bell pull. Designed for quick and easy installation. Available in aged brass (BPcI) or aged nickel (BPcIN) finish. Complete with crackled, porcelain 'PULL' disc, hard wood back plate and internal 'blanking' pulley. Screws, wall plugs, plastic tube (dust liner) and full fitting instructions also supplied.

*157mm (H), 157mm (W). Projection when fitted (including wooden back plate) 57mm.*

*Projection into brickwork 132mm.*

Easy installation:  
Dish sits 'inside' wooden  
back plate to eliminate the  
need to chase-out brickwork.



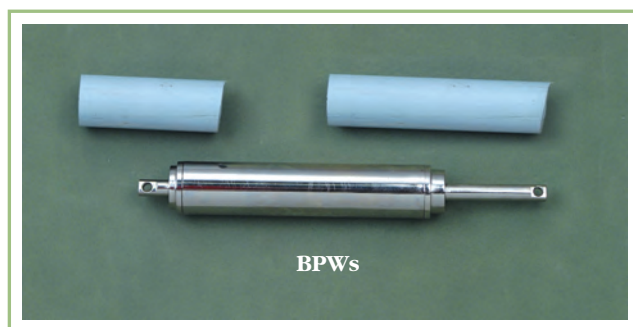


Solid brass, sprung, Lichfield bell pull. Gothic revival style. Available in three finishes – aged brass, blackened brass and aged nickel. Our blackened brass finish replicates the wrought iron finish, so popular with country properties, but avoids the problems of rust. Ideal for use with our period internal bell (see page 11).

Each pull comes complete with its own return spring which locates, out of sight, in the wall and ensures that the pull returns to its set position each time. IMPORTANT – Please note that this return spring is only suitable for double cavity (or thicker) walls.

Also included are: matching internal blanking pulley, plastic dust liners, nylon cord, screws, raw plugs and fitting instructions.

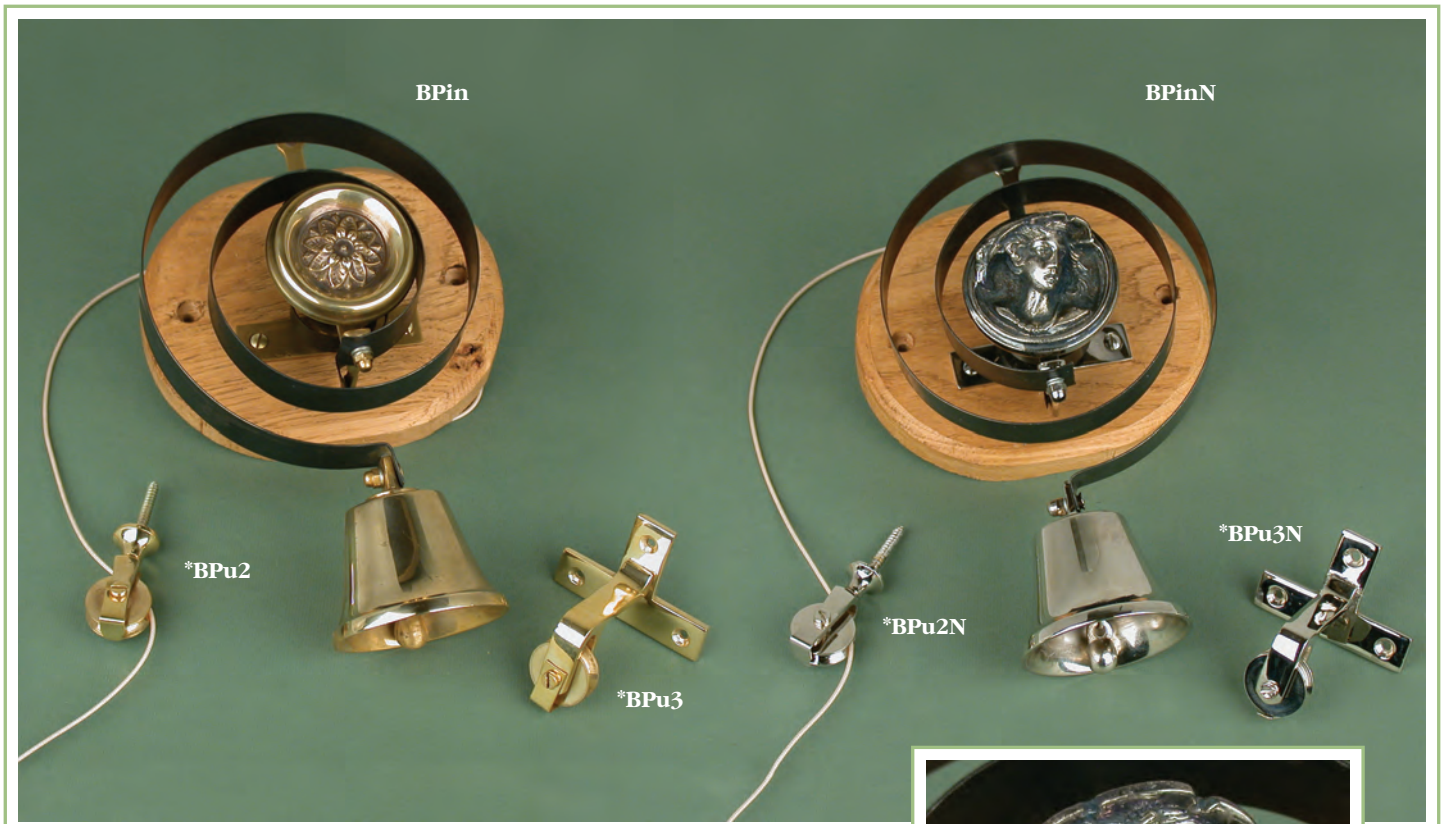
*720mm (H), 102mm(W). Projection 67mm.*



Our wall return spring is available for purchase, separately and is the ideal way to spring load old, tired or broken bell pulls, Suitable for double cavity (or thicker) walls ONLY.

*Maximum recommended weight of pull rod 1.0kg.*

*Minimum length 240mm. Diameter 26mm.*



Period internal bell, with a choice of either 'Lady' or 'Flower' disc. Available in aged brass (BPin) or aged nickel (BPinN) finish. Mounted on oak backplate. Complete with one extension and one directional pulley.

*Bell - 230mm (H), 160mm (W). Projection 120mm.*



Lady disc



Flower disc

\*Additional pulleys available separately.

- *Blanking pulley, (BPu1). Fits internally, directly opposite pulley on rod pull. 60mm (W). Projection 50mm.*
- *Extension pulley (BPu2). Fits between BPu1 and bell. 21mm (W), Projection 55mm.*
- *Directional pulley (BPu3). Enables 'pull cord' to run from vertical to horizontal (or vice versa). 61mm (W), 66mm (H). Projection 55mm.*



This circular, Edwardian styled Foley bell press is suitable for use with all modern day, battery powered chimes. Cast in solid brass, it incorporates a beautifully detailed 'crackled' aged effect, ceramic press. It is mounted onto a solid oak backplate and comes complete with fixings and full fitting instructions.

Available in either aged brass or polished nickel finish.

N.B: Wiring to bell chime not supplied

*Oak backplate diameter – 120mm*

*Brass backplate diameter – 100mm*

*Ceramic disc diameter – 25mm*

*Projection – 27mm*



Crackled ceramic 'PRESS' button detail.

Wired connections detail.



# FINGER PLATES



Faithful copies of three period finger plates – the Art Nouveau (FPan), Lincoln (FPI) and Chester (FPch). Stamped, as per the originals, out of solid brass sheet plate. Available in either polished nickel or aged brass finish. Complete with fixing screws.

*Art Nouveau (FPan) – 75mm x 300mm.*

*Lincoln (FPI) – 80mm x 290mm.*

*Chester (FPch) – 75mm x 280mm*

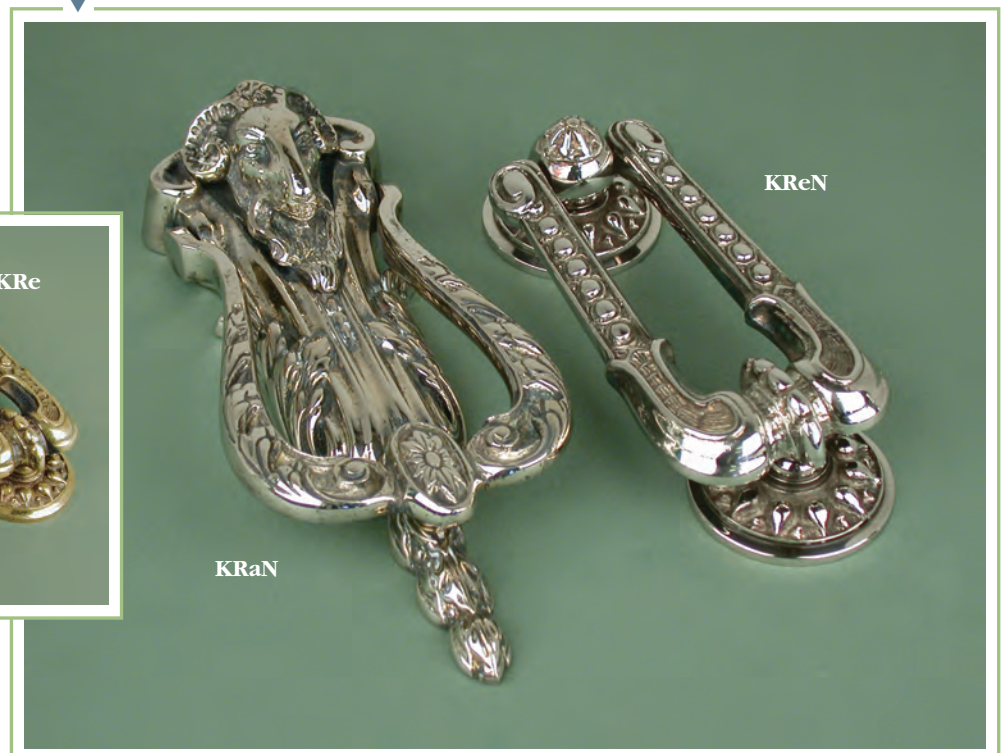


# KNOCKERS



A choice of four period door knockers, cast in brass. Available in either brass or nickel finish (see table opposite).

CODE	DESCRIPTION	MAX. DIMENSIONS (mm)			FINISH
		LENGTH	WIDTH	PROJ.	
KDo/KDoN	Doctor's, brass knocker	195	38	80	Polished brass or polished nickel
KLi/KLiN	Lion's head, brass knocker	165	92	43	Aged brass or aged nickel
KRa/KRaN	Ram's head, brass knocker	232	100	46	
KRe/KReN	Regency, brass knocker	180	71	39	



# DOOR PULLS & BOLTS

A choice of two octagonal, cast brass door pulls. Available in either polished brass or polished nickel finish.

*Small octagonal pull.*

*Projection – 78mm.*

*Knob – 73mm (points), 68 (flats).*

*Rose – 81mm (points), 77 (flats).*

*Large octagonal pull.*

*Projection – 113mm.*

*Knob – 110mm (points), 103 (flats).*

*Rose – 113mm (points), 105 (flats).*

Arts & crafts, (circa 1902) solid brass, spring-loaded door bolts. Two sizes available - small or large.

Aged brass or aged nickel finish.

- **SMALL**

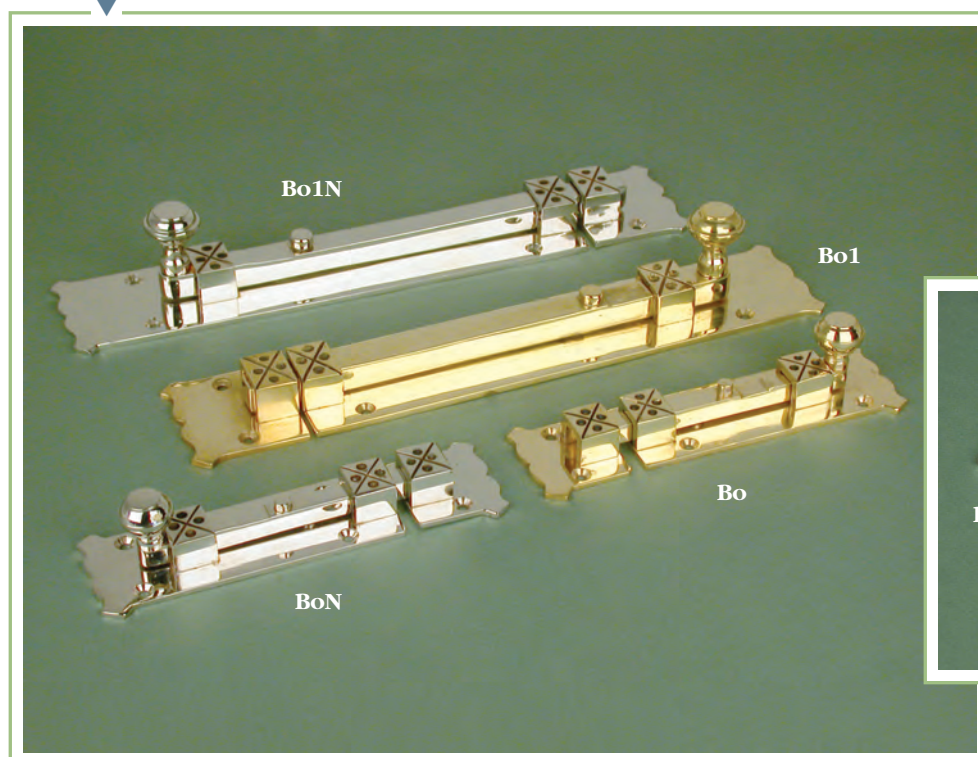
*Bolt – 113mm x 45mm. Projection – 34mm.*

*Catch – 37 mm x 45mm. Projection – 17mm.*

- **LARGE**

*Bolt – 225mm x 56mm. Projection – 46mm.*

*Catch – 47 mm x 56mm. Projection – 20mm.*



Bolt location plate available separately for both sizes of bolt. Polished brass or nickel finish.

- **SMALL**

*Plate – length 36mm*

*– width 23mm*

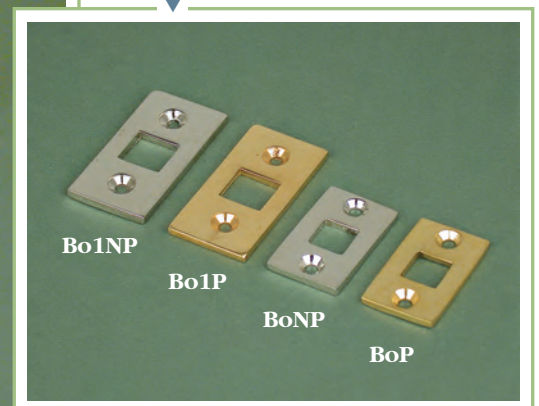
*– thickness 3mm*

- **LARGE**

*Plate – length 50mm*

*– width 25mm*

*– thickness 3mm*



# TOILET ROLL HOLDER



TRN



A faithful copy of an original Victorian toilet roll holder – featured in the 5 July 1884 'Ironmonger' periodical. Reported to be the first holder able to use un-perforated toilet paper.

Cast in brass. A choice of aged brass (TRb) or aged nickel plated brass (TRN) aged finishes. Updated, spring-loaded spindle. Mounted on oak back plate. Suitable for use with toilet rolls from all major suppliers.

*190 mm (H) x 200mm (W).*

*Projection (without paper) – 105mm.*



TRb



